

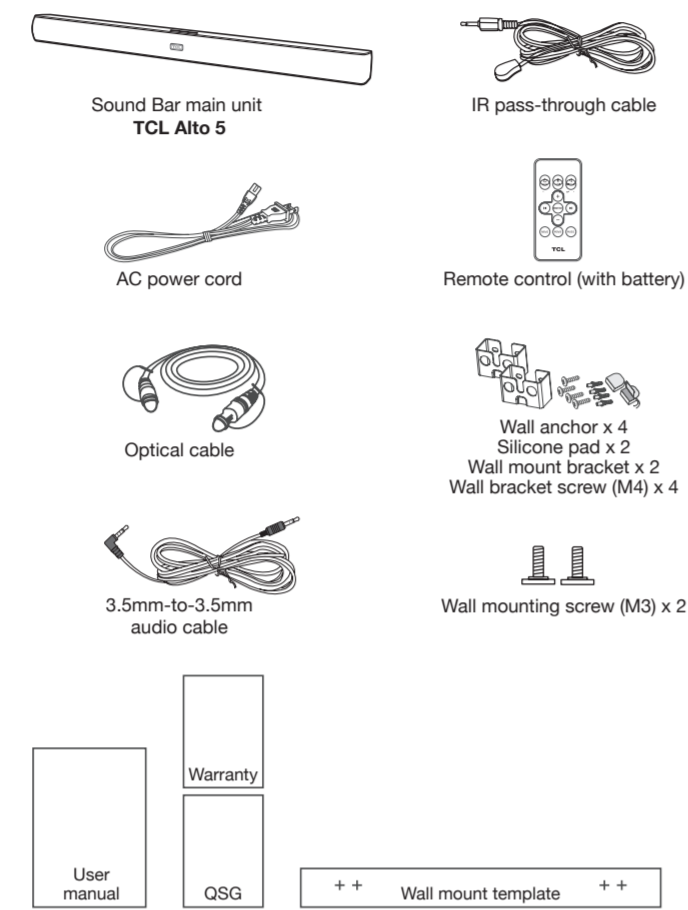
**TCL**

2.0 Channel Home Theater Sound Bar  
Alto 5

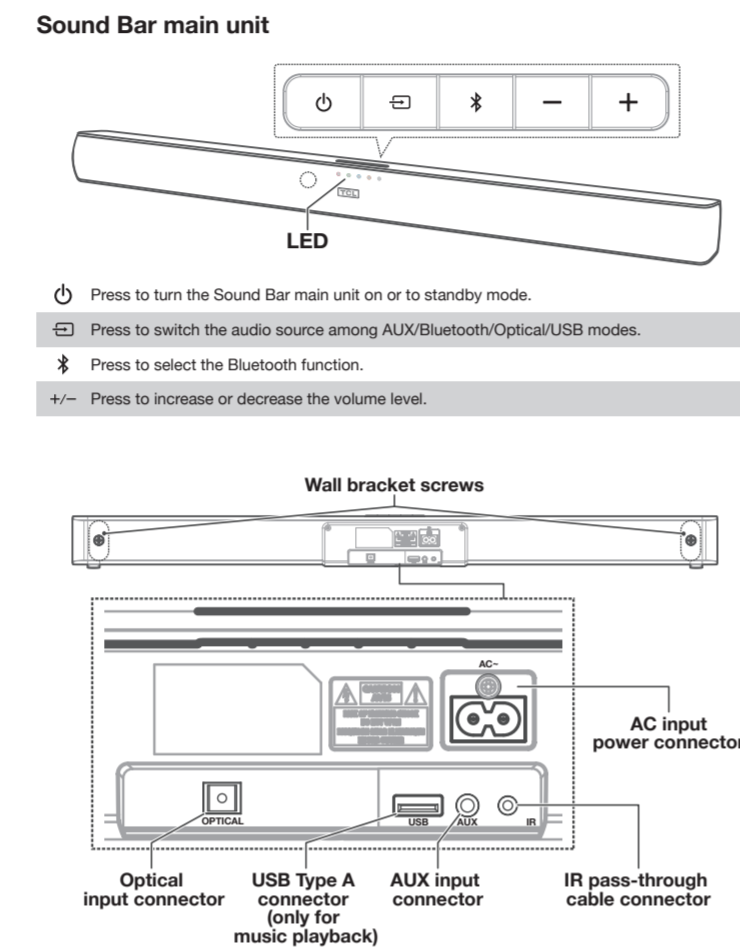


Quick start guide

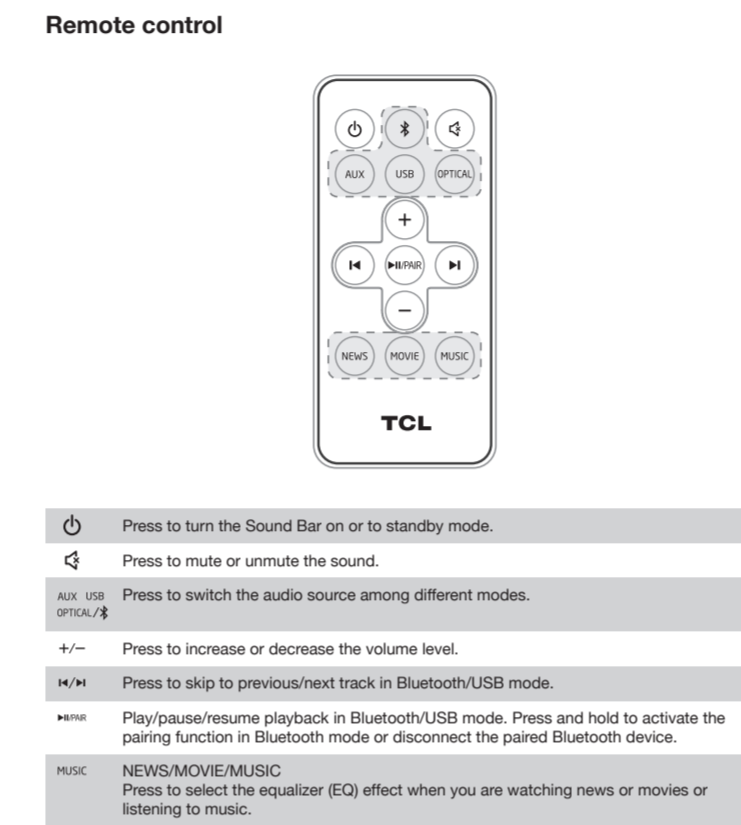
1. What's in the box



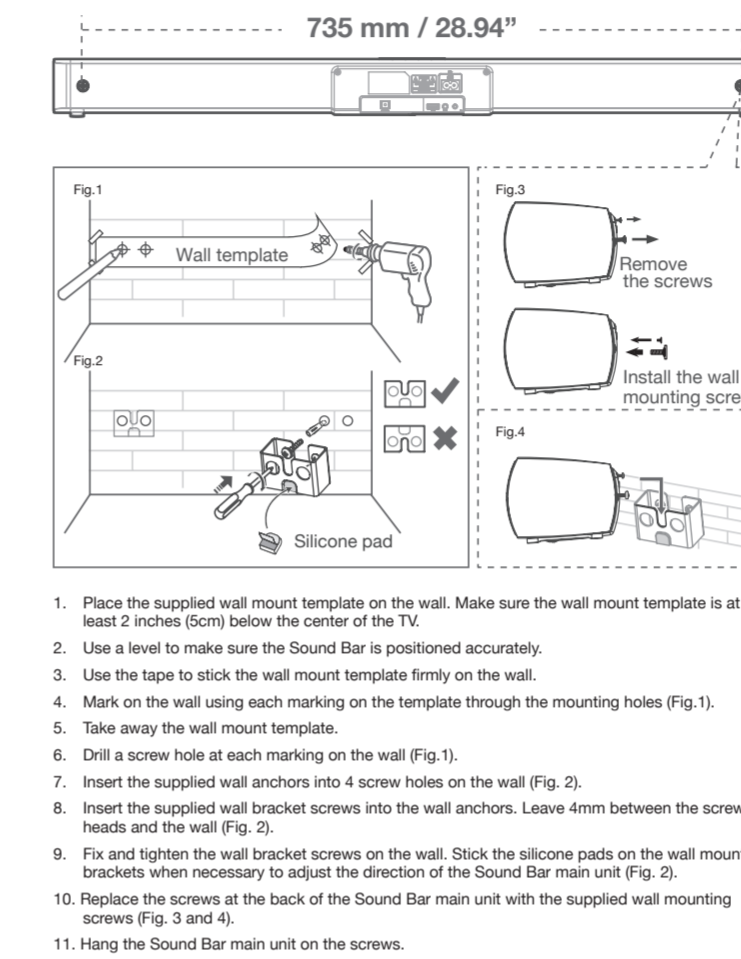
2a Overview



2b Overview



3. Wall mount



DO NOT RETURN TO STORE

**WE ARE READY TO HELP** contact us first with any questions

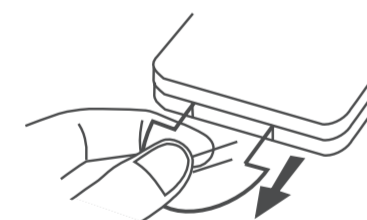
TCL SUPPORT:  
www.tclusa.com/support or  
www.tclcanada.com/support  
1-877-300-9223

**TAKE CARE WHEN REMOVING THE SOUNDBAR**

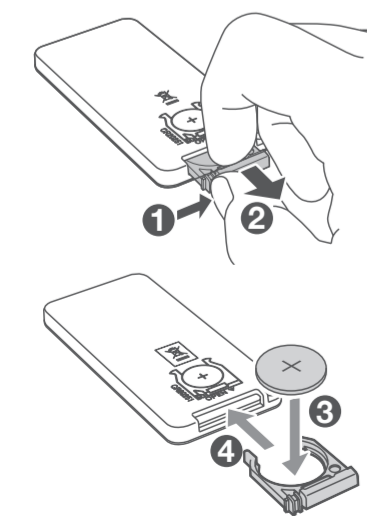
Copyright © 2019 TCL. All rights reserved.  
TS6000\_US\_EN\_QSG\_V2.0

Bluetooth  
DOLBY AUDIO

4a Activate the remote control

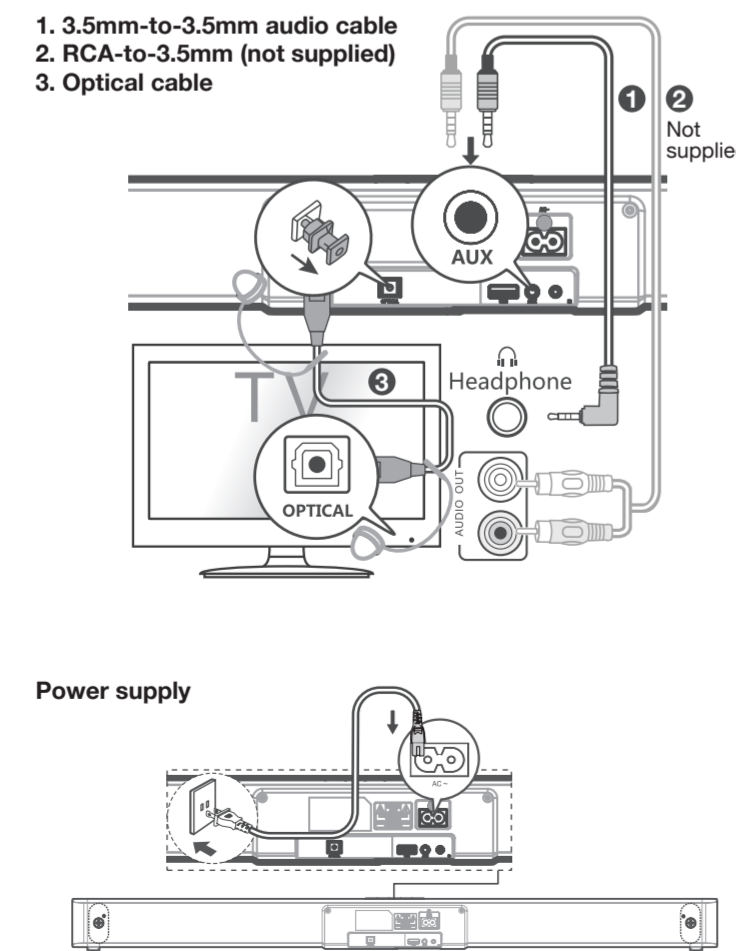


4b Replace the remote control battery

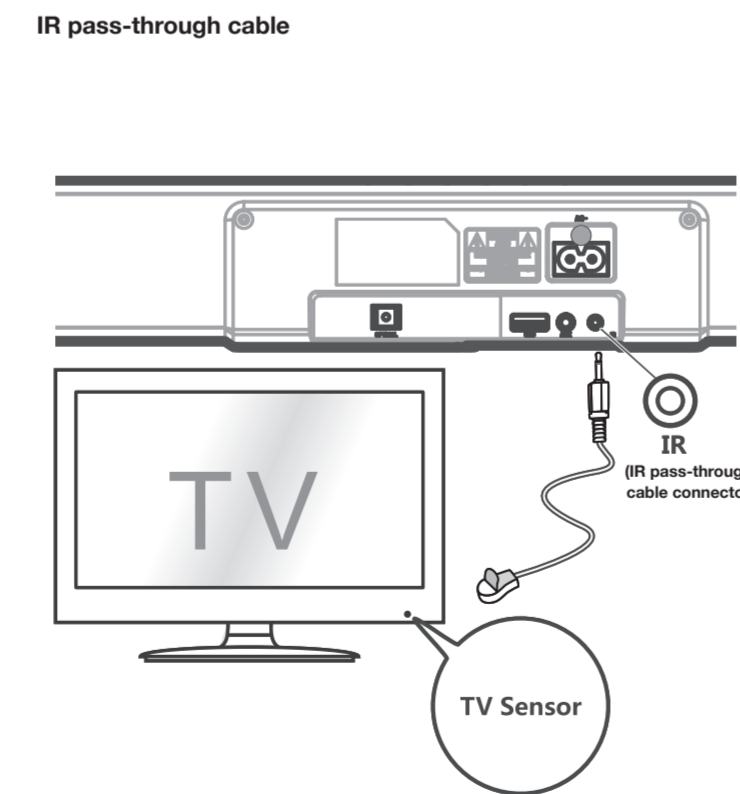


Battery type:  
Lithium CR2025 battery (160 mAh) x 1

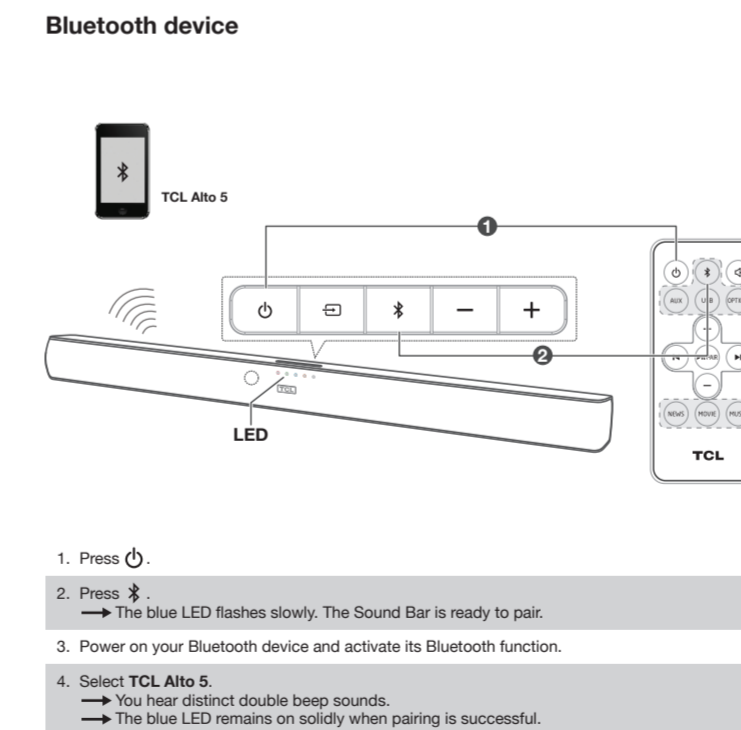
5a. Connect



5b. Connect



6. Pairing



7a. Use

**LED behaviors under different source mode**

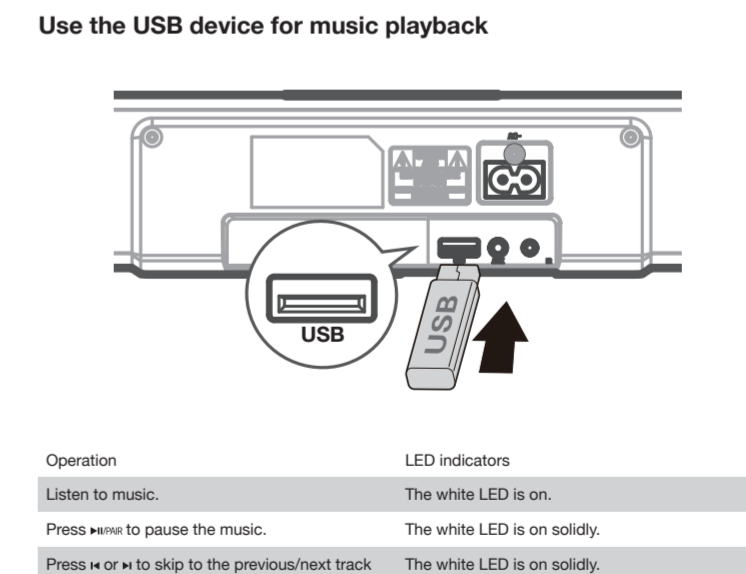
Sound Bar status	LED indicators
in standby mode	The red LED is on solidly.
in AUX mode	The green LED is on solidly.
in Bluetooth mode	The blue LED is on solidly.
ready to pair	The blue LED flashes slowly.
pairing in progress	The blue LED flashes quickly.
in optical mode	The orange LED is on solidly.
in USB mode	The white LED is on solidly.

7b. Use

**Remote sound functions**

Operation	LED indicators
+/-	The white LED flashes quickly and goes back to the source LED.
⏏	The red LED keeps flashing.
⏪	The red LED flashes and goes back to the source LED.
⏩	The white LED flashes once.
MUSIC	The green LED flashes once.
NEWS	The orange LED flashes once.

7c. Use



Operation	LED indicators
Listen to music.	The white LED is on.
Press MUTE to pause the music.	The white LED is on solidly.
Press ⏪ or ⏩ to skip to the previous/next track	The white LED is on solidly.